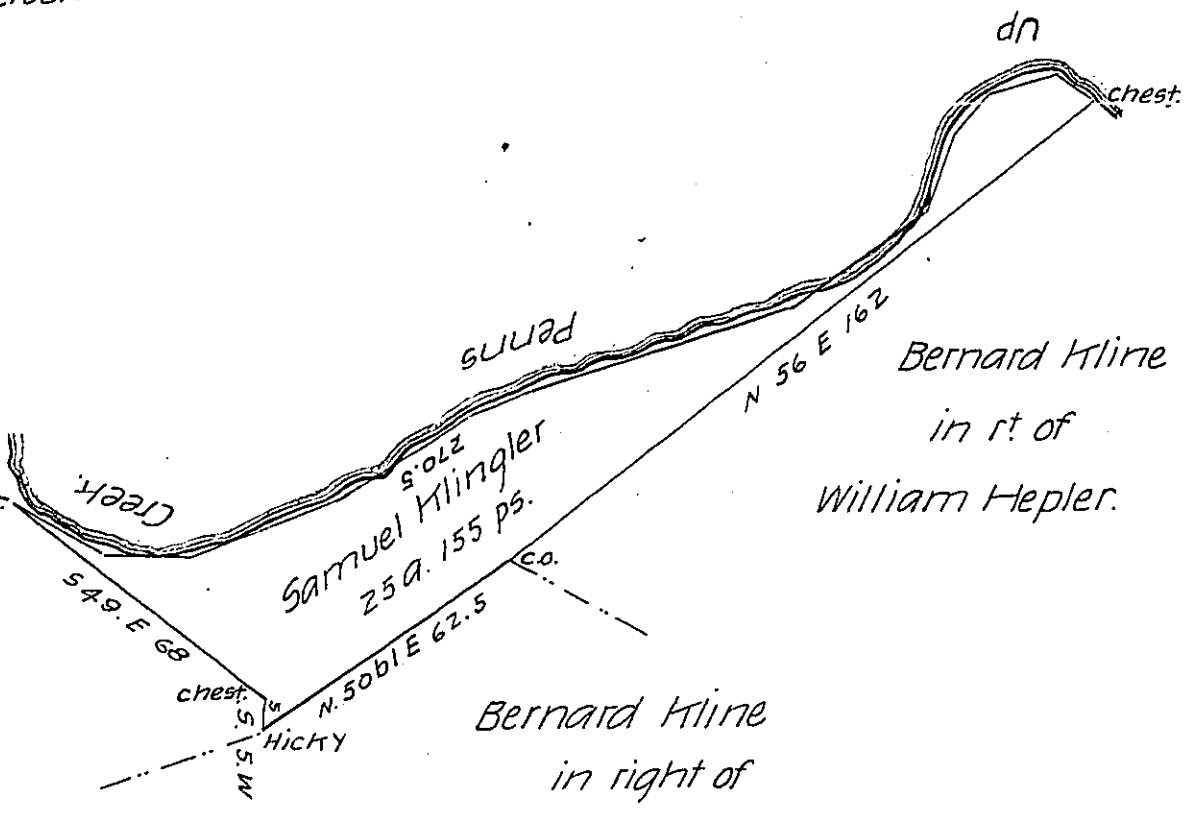


FORM No. 1.

Courses & Distances from  
Chestnut up Penns Creek

- N. 57. W. 10
- S. 80. W. 14
- S. 44. W. 12
- S. 23. W. 16.5
- S. 57. W. 38
- S. 76. W. 58
- S. 71. W. 14
- S. 61. W. 34
- S. 73. W. 34
- N. 86. W. 18
- N. 60. W. 22 to W.O. w.o.
- 270.5 Ps.



Geo. Klingler  
in right of  
Joseph Pleine

Bernard Kline  
in right of  
John Shock.

Bernard Kline  
in rt of  
William Hepler.

Situate in Penns township in the County of Union Surveyed  
the 24th day of November A.D. 1824 for Samuel Klingler in pursuance of his Warrant bearing  
date the Second day of November A.D. 1824 Containing twenty five acres  
and one hundred & fifty five perches with the usual allowance of  
Six Pr. Cent &c.

Pr. Jno Hayes D.S.

To Gabriel Hiester Esq.  
Surveyor General of Penna.

IN TESTIMONY that the above is a copy of the original remaining on file in  
the Department of Internal Affairs of Pennsylvania, made  
conformably to an Act of Assembly approved the 16th day of  
February, 1833, I have hereunto set my Hand and caused  
the Seal of said Department to be affixed at Harrisburg,  
this eighth day of September 1905.

*Geo. D. Brown*  
Secretary of Internal Affairs.